



Te = -8°C | Tin = 0°C, RH = 85% | R404A

Te = -6°C | Tin = 0°C, RH = 85% | R404A

Applications

This product range design is particularly dedicated to the conservation of plant products, such as fruits and vegetables – hence the name “Fruit Coolers”. This unit cooler operates at slightly positive cell temperatures $t = 3$ to 0°C with low temperature gradients $DT_1 = 6\text{ K}$, thus enabling both the conservation and prevention from dehydration of the stored goods.

Heat exchanger

The peculiarity of this set is due to reverse air flow, obtained by using so-called “blowing through” fans.

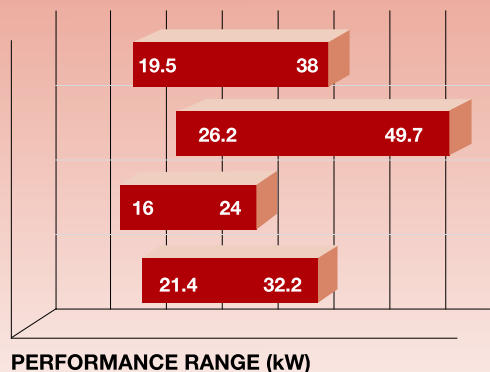
The outcoming air is driven upwards by a baffle, fixed on the frame. The result is a very even distributed air flow that can be straight directed towards the stored fruit and vegetables. The tube pattern adopted is a typical refrigeration one, triangular 50mm, with copper pipes diam. 16mm. The pattern enables electric heaters positioning inside copper pipes inbetween the circuit ones, thus enhancing the defrost efficiency.

FC 45 DT₁=6K

FC 45 DT₁=8K

FC 40 DT₁=6K

FC 40 DT₁=8K



Fans

The modular design incorporates 2 different sizes of fans (400 and 450 mm) 3 ph - 400V - 50Hz.

Frame & Casework

The casing is made totally of galvanized steel painted RAL 9010, constructed in order to provide maximum strength and simple interchange with different operating and defrosting available.

CODE DESCRIPTION

FC 4 40 6 6 D6 E

FC	Product series Fruit Cooler
4	Number of fans
40	Fan diameter Ø 400mm Ø 450mm
6	Fin spacing 6,0 mm
6	Rows number 6 = rows

D6	Operation system D = Direct expansion Refrigerant connections 6 = Left
E	Defrost systems A Air defrosting E Electrical defrosting G Electrical defrosting only drip tray

FEATURES AND BENEFITS

Even Air Distribution/ Low Air Speed

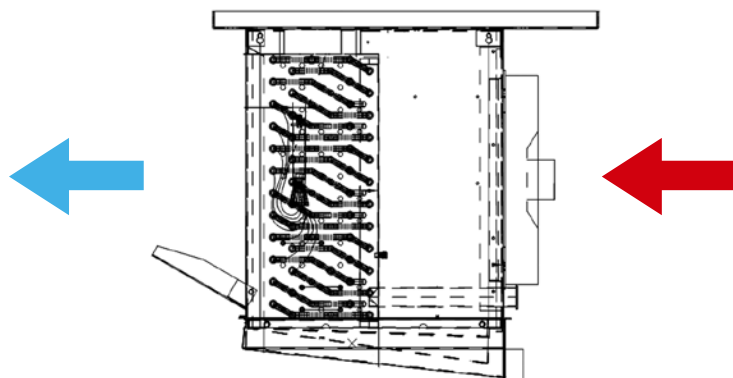
- This feature is particularly suitable to vegetables and fruit handling.

Coil design

- Geometry specifically designed for fruit and vegetable storage with corrugated "TK fins" and Ø 1/2" tubes.

Casing

- Painted casing RAL9010

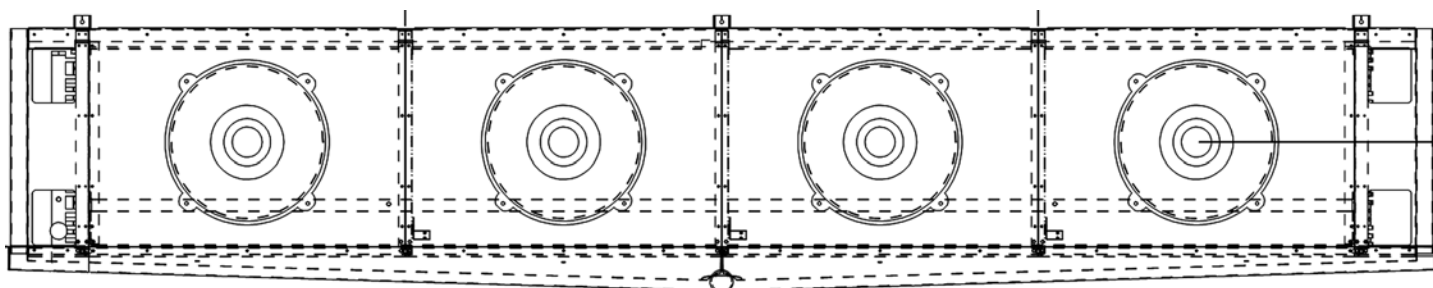


OPTIONS

- Connections on the right
- Connections on the left
- Painted casing RAL 9010
- Insulated drip tray

Defrost systems

- Air defrosting "A"
- Electric defrosting "E"
- Electrical defrosting only drip tray "G"



THERMOKEY

33050 Rivarotta di Teor (UD) Italy - Via dell'Industria, 1
Tel +39 0432 772300 - Fax +39 0432 779734
www.thermokey.com

RTH
GROUP

THERMOKEY

RefComp

SOLARKEY

